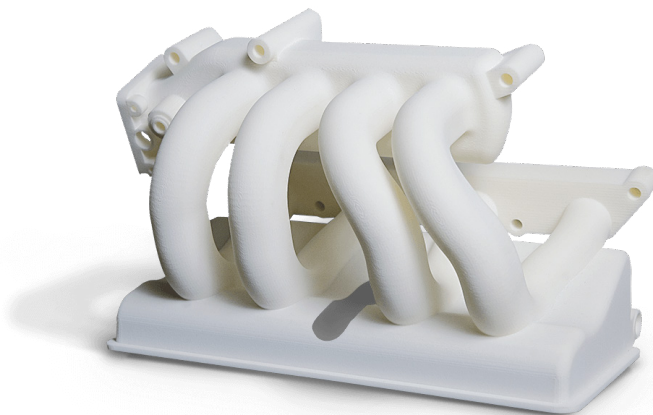


DuraForm PA (SLS)

a 3D Systems Material

DURABLE, ACCURATE, END USE PARTS

DuraForm PA allows for low to mid-volume rapid prototyping and manufacturing, achieving thin walls and excellent detail and feature resolution.



Mechanical Properties	Test Method	Result
Heat Deflection Temp @ 0.45 MPa	ASTM D648	180 Deg C • 356°F
Heat Deflection Temp @ 1.82 MPa	ASTM D648	95 Deg C • 203°F
Ultimate Tensile Strength (XY)	ASTM D638	43 MPa • 6,237 psi
Tensile Modulus (XY)	ASTM D638	1586 MPa • 230 kpsi
Flexural Modulus (XY)	ASTM D790	1387 MPa • 201 kpsi
Elongation at Break (XY)	ASTM D638	14%
IZOD Impact Strength (Unnotched)	ASTM D256	336 J/m @ 23°C • 73°F
IZOD Impact Strength (Notched)	ASTM D256	32 J/m @ 23°C • 73°F
Volume Resistivity (22C, 50%RH, 500V)	ASTM D257	5.9 x 10 ¹³ ohm-cm
Surface Resistivity (22C, 50%RH, 500V)	ASTM E257	7.0 x 10 ¹² ohm
Dielectric Constant (22C, 50%RH, 500V)	ASTM D150	2.73 @ 1 KHz

Intek Plastics makes no warranties of the materials for any particular application, nor does it make a warranty of any type, expressed or implied, including but not limited to, the warranties of merchantability for a particular purpose.